

Adding a Network Printer to Mac OS X 10.3 +

This will step you through the installation of a network printer to your Mac OS X 10.3 or later laptop or desktop computer. This does not apply to the iBook laptops running OS X 10.2, for instructions on adding a printer to your **LITE iBook** please click [here](#).

1. First launch "System Preferences" located in the Apple Menu in the upper left corner of the screen.

System Preferences...

2. Find a click the "Print & Fax" icon within "System Preferences".



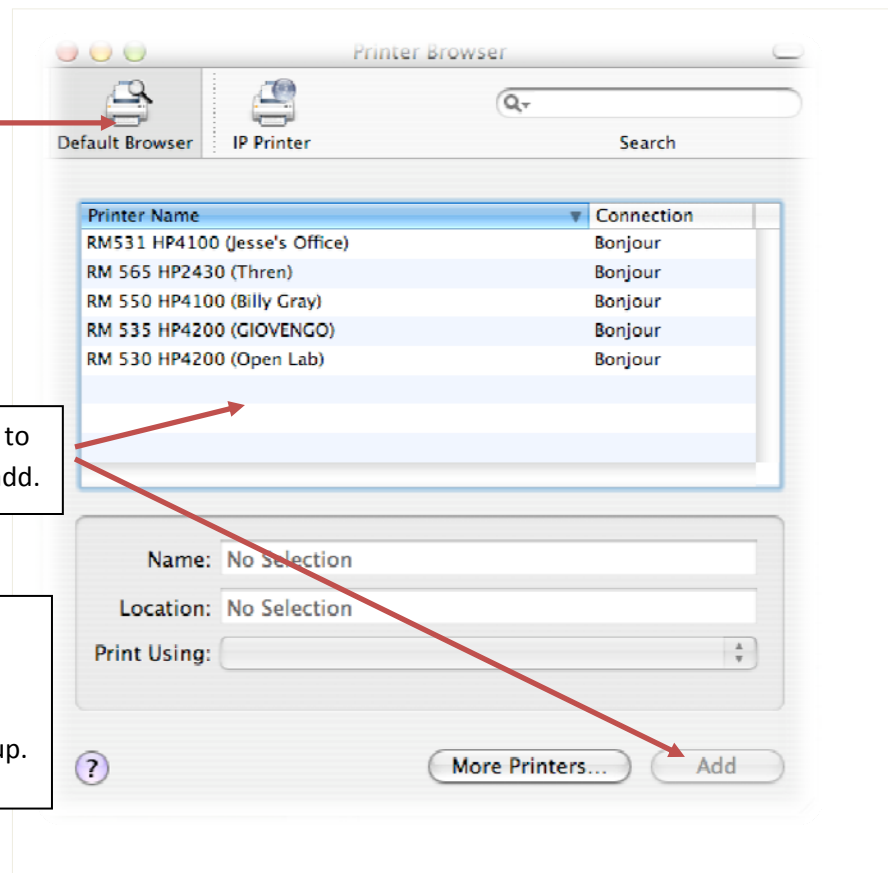
3. A window will appear similar to the one below. At this point we have 2 options and are dependant upon how printers at your site are configured.

OPTION 1: Auto-Configuration.

Selecting "Default Browser" will allow you to view all the "Bonjour" configured printers near you. If your printer is not listed continue to Option 2 (next page).

Step 1: Locate the printer you want to install in the list. Select it and click add.

Step 2: After you click "Add", a window **may** pop up asking you to select "Installable Options". Click "Continue" to finish the printer setup.



Adding a Network Printer to Mac OS X 10.3 +

OPTION 2: Manual Configuration. Before we proceed you must first know the printer's IP address. It may be written somewhere on the printer, if not contact your Tech Specialist for this information.

Step 1: Click the "IP Printer" button. Here we will configure the printer manually.

Step 2: Make sure to select "Line Printer Daemon – LPD" from the menu.

Step 4: Fill in the Name and Location, this is your choice, you can put anything.

Step 5: Selecting "Generic PostScript Printer" will enable you to print to most HP LaserJet printers, however if you have a unique printer or one with special capabilities (color, 2-sided printing, etc.) then you may need to download drivers.

The screenshot shows the 'Printer Browser' window with the 'IP Printer' tab selected. The configuration fields are as follows:

- Protocol:** Line Printer Daemon – LPD
- Address:** 10.16.135.249
- Queue:** AUTO
- Name:** My Printer
- Location:** My Classroom
- Print Using:** Generic PostScript Printer

Buttons at the bottom include 'More Printers...' and 'Add'.

Step 3: Type the IP Address. Set the "Queue" to "Auto".

Step 6: Click "Add" to finish the printer installation